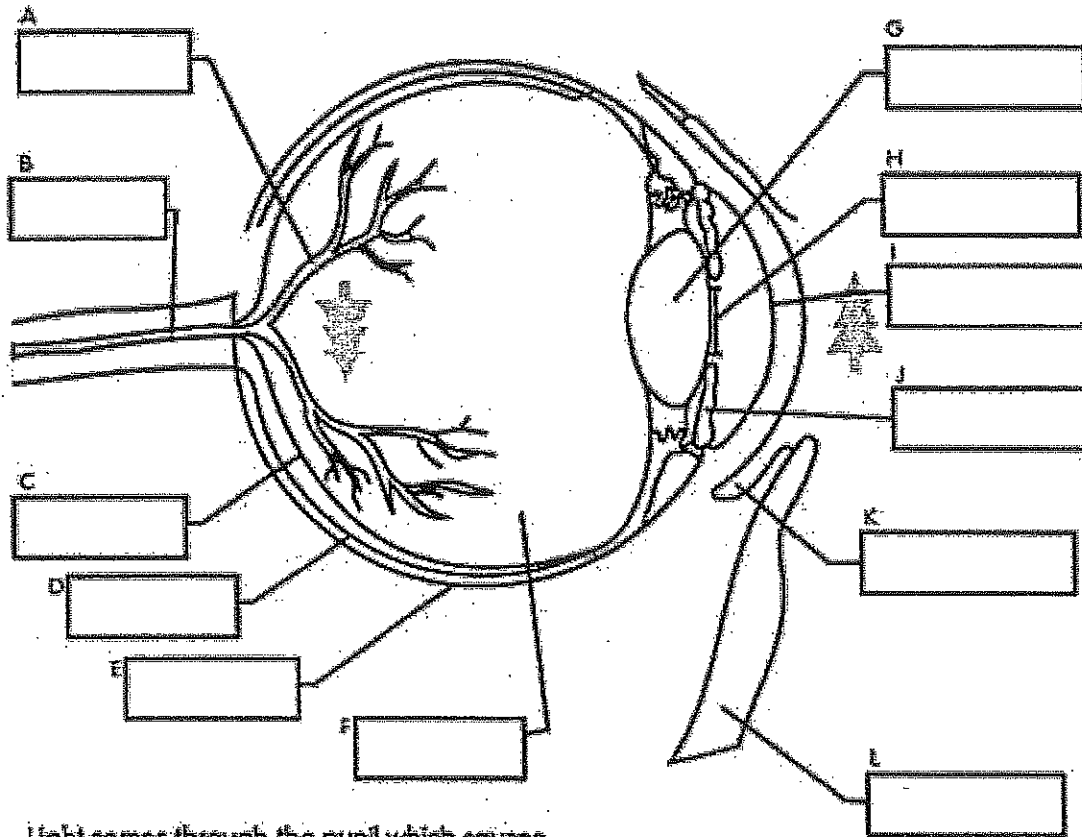


HUMAN EYE

Color the parts of the eye. Use the words in the box below to identify parts of the human eye. The eye is the organ that collects images and sends them to the brain, so you can see. The eye is protected by the bones of your skull and six muscles.



Light comes through the pupil which causes the cornea and lens to focus on an image. When the image is projected through the eye, onto the retina wall, the image appears upside down.

